

## Form series

Uncompromising design  
and impeccable comfort



**normann**

C O P E N H A G E N

## Perfect shape and endless possibilities

Form tells the story of a design company and a designer with the vision of creating the perfect chair. A tribute to form itself, the uncompromising design combines a strong design idiom with comfortable curves and an innovative industrial technique. The sleek mounting solution developed especially for the Form chair creates a natural integration between seat and base and makes it possible to mount different types of bases in the same openings. While retaining a homogenous and aesthetic design, the Form chair can be customized from more than 100.000 possible combinations of models, colors, textiles and bases, offering a wealth of opportunities for creative expression.



**normann**

C O P E N H A G E N

## Collection overview



**Form chair steel, chrome, brass**  
H: 80 x L: 48 x D: 52 x SH: 44 cm



**Form armchair steel, chrome, brass**  
H: 80 x L: 56 x D: 52 x SH: 44 x AR: 66,5 cm



**Form chair wood**  
H: 80 x L: 48 x D: 52 x SH: 44 cm



**Form armchair wood**  
H: 80 x L: 56 x D: 52 x SH: 44 x AR: 66,5 cm



**Form chair swivel 4L**  
H: 80 x L: 70,5 x D: 70,5 x SH: 44 cm



**Form armchair swivel 4L**  
H: 80 x L: 70,5 x D: 70,5 x SH: 44 x AR: 66,5 cm



**Form chair swivel 4W**  
H: 80 x L: 54 x D: 55,5 x SH: 45 cm



**Form armchair swivel 4W**  
H: 80 x L: 54 x D: 55,5 x SH: 45 cm



**Form chair swivel 5W gaslift**  
H: 73/86 x L: 60 x D: 52 x SH: 37/50 cm



**Form armchair swivel 5W gaslift**  
H: 73/86 x L: 72,5 x D: 72,5 x SH: 37/50 x AR: 59/72 cm



**Form chair stacking steel, chrome**  
H: 80 x L: 58,5 x D: 52 x SH: 44 cm

## Collection overview



**Form bar stool 65 cm stacking steel, chrome**  
H: 77,5 x L: 58,5 x D: 45 x SH: 65 cm



**Form bar stool 75 cm stacking steel, chrome**  
H: 77,5 x L: 60,5 x D: 48,5 x SH: 75 cm



**Form bar stool 65 cm wood**  
H: 77 x L: 43 x D: 42,5 x SH: 65 cm



**Form bar stool 75 cm wood**  
H: 87 x L: 45 x D: 45 x SH: 75 cm



**Form bar stool 65 cm steel, chrome, brass**  
H: 77 x L: 42,5 x D: 42,5 x SH: 65 cm



**Form bar chair 65 cm steel**  
H: 100 x L: 48 x D: 52 x SH: 65 cm



**Form bar armchair 65 cm steel**  
H: 100 x L: 56 x D: 54,5 x SH: 65 x AR: 87 cm



**Form bar stool 75 cm steel, chrome, brass**  
H: 87 x L: 43 x D: 43 x SH: 75 cm



**Form bar chair 75 cm steel**  
H: 110 x L: 49 x D: 54,5 x SH: 75 cm



**Form bar armchair 75 cm steel**  
H: 110 x L: 56 x D: 54,5 x SH: 75 x AR: 97 cm



Form bar chair 65 cm steel,  
Form chair steel,  
Form bar chair 75 cm full upholstery steel

## Product facts

### Description

Form is a contemporary chair series offering impeccable comfort and a strong design idiom. The unique connectors developed especially for the Form series create a smooth transition between the seat and frame, while making it possible to seamlessly adapt the chair to various kinds of leg types.

### Designer / Year of design

Simon Legald / 2014

### Material

Shell: Polypropylene / Polypropylene with upholstery  
Legs: Powder coated steel / Chrome / Brass plated steel / Powder coated aluminum / Lacquered oak / Lacquered walnut / Painted and lacquered oak

### Construction

Form is delivered assembled. The molded connectors match the legs in color, creating a seamless transition from legs to shell. ►

**normann**

C O P E N H A G E N

► **Stackability**

The Form chair stacking and Form bar stool stacking are stackable, up to 6 pcs. Compatible with our Chair Rack. Stackable up to 15 chairs on our single version Chair Rack and up to 30 on our double version Chair Rack.

**Maintenance**

Polypropylene: Clean with damp cloth.

Textile: Clean with textile or upholstery cleaner.

Leather: Clean with a damp cloth. Use warm water with soap flakes. Frequent vacuuming with a soft fitting is recommended for both textile and leather to preserve color and appearance. Please be aware that sharp objects can leave marks.

We recommend to check and tighten screws every 3-6 months. Please make sure your choice of glides is suitable for the type of flooring. We recommend to check the glides every 3-6 months. If worn down, please replace.



Form armchair swivel 4L full upholstery aluminum



Form chair full upholstery oak

► **Accessories**

Comes with PE/POM/PP glides. Felt glides can be purchased separately. See Glides Overview.  
Can be connected with our Chair Link.  
Form chair (wood, steel and stacking) is compatible with our Chair Suspension.  
Form seat cushion for the Form chair and Form armchair can be purchased separately.

**Test**

Form chair wood, steel, chrome and brass  
EN 1022:2005 and EN 16139:2013. Level 2  
Form armchair wood, steel, chrome and brass  
EN 1022:2005 and EN 16139:2013. Level 2  
ANSI/BIFMA X5.4-2012  
Form bar stool steel, chrome, brass and wood 65 cm  
EN 1022:2005 and EN 16139:2013. Level 2  
ANSI/BIFMA X5.4-2012  
Form bar stool steel, chrome, brass and wood 75 cm  
EN 1022:2005 and EN 16139:2013. Level 2  
ANSI/BIFMA X5.4-2012  
Form bar stool stacking steel and chrome 65 cm  
EN 1022:2005 and EN 16139:2013. Level 2  
Form bar stool stacking steel and chrome 75 cm  
EN 1022:2005 and EN 16139:2013. Level 2  
ANSI/BIFMA X5.4-2012

**normann**

C O P E N H A G E N

## Environmental information



### Recyclable

All materials can be recycled. Our chairs are clearly marked with the material and recycle symbol.

### REACH

Normann Copenhagen and our suppliers commit to follow the regulations of REACH at any time. According to the regulations of REACH, none of the materials used for the Form chair require registration.

### Emission test

ANSI/BIFMA – CDPH 01350

### Polypropylene shells

Chair shells are made from recyclable virgin polypropylene (PP), which has the following advantages:

- It consumes low energy during production
- It produces low carbon dioxide emissions, when compared to other polymers
- It can be recycled several times and be used in many different applications
- It is not considered hazardous materials under the OSHA Hazard Communication Standard
- It offers high resistance and durability

### Wood bases

Wood bases are made from sustainable forestry, which is FSC-certified and follows the EUTR (EU Timber regulation).

### Steel bases

Steel bases are made from cold steel with a powder coating. The powder coating does not contain any VOC (Volatile Organic Compounds) and meet the REACH regulation (EC) no. 1907/2006

### Upholstery

We offer upholstery in fabrics certified to the EU ECO label and/or OEKO-TEX and fabrics based on recycled materials.

**normann**

C O P E N H A G E N



## Material options

### Shell



White Grey Black Blue Green Red

### Wood legs



Oak Walnut Black

### Stacking base



White Grey Black Blue Green Red Chrome

### Steel legs



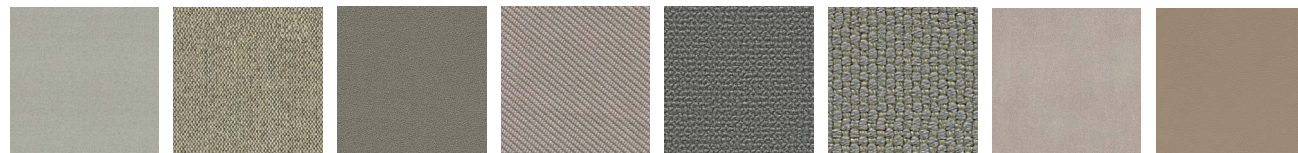
White Grey Black Blue Green Red Brass Chrome

### Swivel 4L / Swivel 4W / Swivel 5W gaslift



Aluminum Black

### Upholstery (all available in several colors)



Camira Synergy Camira Main Line Flax Camira Aquarius Camira Oceanic Camira Yoredale Camira Zap JAB City Velvet Sørensen Leather Ultra

Form chair

---



Form chair oak

**normann**

C O P E N H A G E N



Form armchair full upholstery oak



Form chair swivel 4W full upholstery

Form chair

---

Form armchair swivel 5W gaslift aluminum



**normann**

C O P E N H A G E N

Form chair

---

Form bar stool 65 cm full upholstery brass,  
Form bar stool 75 cm full upholstery brass



Form bar armchair 65 cm steel with seat cushion,  
Form bar chair 65 cm steel with seat cushion



Form bar stool 65 cm full upholstery oak



Form bar chair 65 cm full upholstery steel

# Contact

## Normann Copenhagen

Østerbrogade 70, 2100 Copenhagen, Denmark

[normann@normann-copenhagen.com](mailto:normann@normann-copenhagen.com)

+45 35 55 44 59

**normann**

C O P E N H A G E N