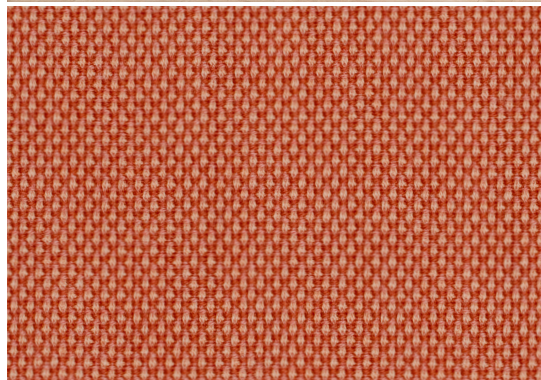


ROPE SOFA





ROPE SOFA

FURNITURE / ACCESSORIES / LIGHTING

DESIGNER / YEAR OF DESIGN	Hans Hornemann / 2016
MATERIAL	Textile: Gabriel – Fame, Gabriel – Fame Hybrid, Gabriel – Breeze Fusion or Sørensens Leather – Ultra Leather Legs: Laquered Wood
FABRIC SPECS	Gabriel/Fame: 95 % Wool, 5 % Polyamide, 200.000 Martindale, Pilling 4. Gabriel/Fame Hybrid: 95 % Wool, 5% Polyamide. 1 50.000 Martindale, Pilling 4. Gabriel/Breeze Fusion: 88 % Wool, 12 % Polyamide, 100.000 Martindale, Pilling 4-5. Sørensens Leather/ Ultra: 100% Leather.
COLORS	All colours in the textiles offered
CONSTRUCTION	Rope consists of a wooden frame with pocket springs. The frame is covered in durable furniture foam all over, ensuring optimal sitting comfort. The sofa features piping on all edges. The legs are made of black lacquered wood and measure approx. 1,5 cm in height
DIMENSIONS	Various - the dimensions of the individual modules can be found in the document "Rope Modular Sofa Overview"
MAINTENANCE	Textile: Clean with textile or upholstery cleaner. Leather: Clean with a damp cloth. Use warm water with soap flakes. Frequent vacuuming with a soft fitting is recommended for both textile and leather to preserve color and appearance.

