

# AAC 42

PRODUCT FACT SHEET



## AAC 42

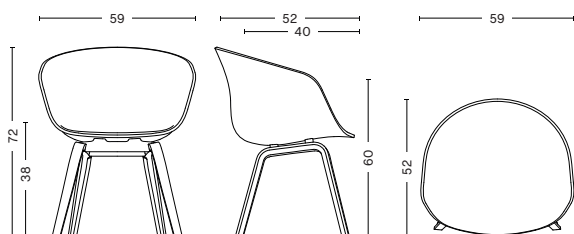
DESIGN BY HEE WELLING & HAY, 2010

With its shorter legs and solid, rounded shell, this About A Chair version occupies a position between a lounge chair and an easy chair – laid-back, but offering the same simple design expression and great comfort. The wide range of shell colours, upholstery options and finish choices for the legs allow a broad spectrum of use in a variety of public spaces or private settings.

### HIGHLIGHTS

- Part of a multi-functional family of dining and conference chairs, office chairs, bar stools, lounge chairs, tables, an ottoman and a sofa.
- Variability of shell colours and base finishes.
- Available with plastic shell, with front upholstery (AAC 42) and full upholstery (AAC 43) in a large selection of fabrics and leathers.
- Other base options are: 4-leg steel base, sled base, swivel base, wheel base and solid wood legs.
- Shell is also available without armrest.
- Suitable for a wide variety of private and public environments.
- Qualified for contract use.

### DIMENSIONS



WIDTH 59 CM | 23.23"  
DEPTH 52 CM | 20.47"  
HEIGHT 72 CM | 28.35"  
SEAT HEIGHT 38 CM | 14.96"  
SEAT DEPTH 40 CM | 15.75"

### MATERIALS

#### SHELL

Injection moulded solid-coloured polypropylene shell with armrest.  
Shell thickness: 10 mm.

#### BASE

Moulded plywood base. Inner plywood in beech, top veneer in oak.

#### GLIDER

Plastic. Standard on all variants. Suitable for all floorings that are not too sensitive.

### OPTIONS

Felt gliders for wooden floors.  
Front upholstery 10 mm foam.  
Seat Pad an anti-slip backside.  
CMHR foam (fire retardant).

### CONSTRUCTION

Plywood legs section connected with solid oak top parts which are glued and fixed with embedded metal brackets.

### COUNTRY OF ORIGIN

Denmark  
Poland (with front upholstery)

## COLOUR & FINISH

Please note that the colour codes are indicative.

	BASE	BLACK WATER-BASED LACQUERED OAK	WATER-BASED LACQUERED OAK	SOAPED OAK
<b>SHELL</b>		 RAL 9005		
BLACK RAL 9005		•	•	•
WHITE RAL 9003		•	•	•
CONCRETE GREY NCS 3502-B		•	•	•
CREAM WHITE RAL 9010		•	•	•
SOFT BLACK RAL 9010		•	•	•
PASTEL GREEN PANTONE 15-6307 TPX		•	•	•
BRICK PANTONE 19-13387 TPX		•	•	•
GREEN NCS 8010 G30Y		•	•	•
GREY RAL 7037		•	•	•
WARM RED RAL 3016		•	•	•
ORANGE NSC 3560 Y70R		•	•	•
KHAKI PANTONE 17-1210 TPX		•	•	•
DUSTY GREEN NCS 6005 G20Y		•	•	•
DUSTY BLUE PANTONE 16-4408 TPX		•	•	•
MUSTARD PANTONE 118C		•	•	•

## FABRIC & LEATHER UPHOLSTERY

Please see our Fabric Overview for approved standard fabrics.

[LINK TO OVERVIEW](#)

## SUSTAINABILITY

HAY focuses on developing long-lasting products that minimise our environmental impact. We optimise the use of sustainable materials such as recycled materials, FSC-certified wood and water-based lacquer, with a growing number of eco-certified products. We have strict regulatory requirements, and the majority of our products are tested to comply with international standards for strength, durability and safety.

[LINK TO ENVIRONMENTAL PROFILE](#)

## CERTIFICATES



FSC™ LABEL MIX

Made from FSC™-certified wood and other controlled materials.

## TESTS

EN 16139:2013

Furniture - Strength, durability and safety - Requirements for non-domestic seating.

L2 Extreme use - Loading according to Test severity L2.

## WARRANTY

HAY provides a 5-year product warranty. Please contact the HAY sales team for further information about the warranty terms and conditions.

## CARE & MAINTENANCE

Our Care & Maintenance offers guidance for optimal maintenance of your HAY product. It includes advice and instructions on cleaning and caring for specific materials to prolong the life of your furniture. Find the guide at [hay.com](http://hay.com).

[LINK TO CARE & MAINTENANCE](#)

## DOWNLOADS

Packshots and lifestyle photos, 2D / 3D files, care and maintenance, instructions, test certificates, product fact sheets, and product presentations are available in our Image Bank at [hay.com](http://hay.com).

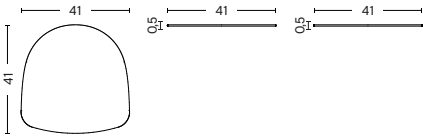
[LINK TO IMAGE BANK](#)



## SEAT PAD FOR AAC W. ARM

Designed to add extra comfort to the About a Chair and About a Stool series, a new collection of seat cushions has been developed to fit all models within the two series. The padded cushions feature non-slip backing and are available in different sizes, materials and colours.

### DIMENSIONS



WIDTH 41 CM | 16.14"  
DEPTH 41 CM | 16.14"  
HEIGHT 0,5 CM | 0.2"

### MATERIALS

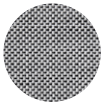
Polyurethane foam, Non-slip backing.

SURFACE BY HAY IN SELECTED COLOURS  
90% New Wool, 10% Nylon.

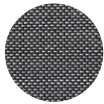
STEELCUT TRIO IN SELECTED COLOURS  
90% New Wool, 10% Nylon.

LEATHER  
Pigmented leather.

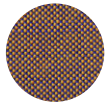
### FABRIC COLOUR



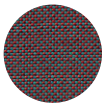
SURFACE BY HAY  
120  
LIGHT GREY



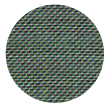
SURFACE BY HAY  
190  
DARK GREY



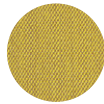
SURFACE BY HAY  
480  
BRONZE



SURFACE BY HAY  
680  
CHERRY RED



SURFACE BY HAY  
950  
APPLE GREEN



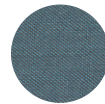
STEELCUT TRIO  
453  
GOLDEN YELLOW



STEELCUT TRIO  
616  
CHESS



STEELCUT TRIO  
236  
LIGHT YELLOW



STEELCUT TRIO  
996  
RACING GREEN

### LEATHER COLOUR



BLACK

Please note that the colour codes are indicative.