

ADD T

Francesco Rota | 2016

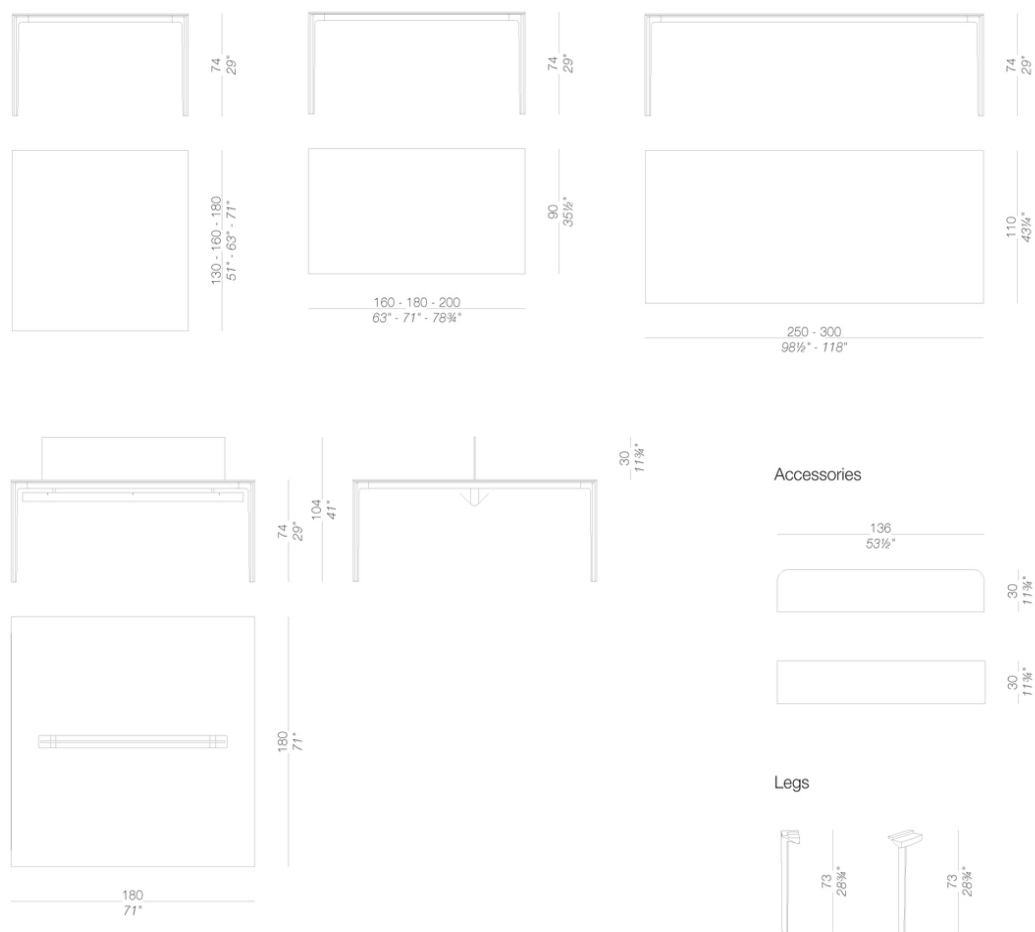


ADD T

Francesco Rota | 2016

Versatility takes the form of many modules, solutions and accessories: ADD T is a modular table that continues the path already undertaken with the ADD Seating System. Its design is simple yet refined, with an element comprising an extruded aluminium frame that seamlessly blends with die-cast aluminium legs. In particular, the end leg connects the crosspieces at 90°, creating a corner, whereas a double one connects the crosspieces at 180°, allowing two or more tables to be joined together. It is the ideal solution for catering establishments, offices, meeting rooms and community spaces in general.





ADD T

Francesco Rota | 2016

Modular system of tables with frame in aluminium extrusion and die-cast corner and linking legs which allows several configurations. Tops available in HPL Fenix® or veneered in black open pore or blanché oak. All metal components are powder coated.

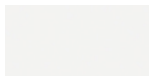
ADD T

Francesco Rota | 2016

frame



powder coating
black
1 Colors

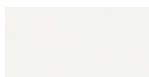


powder coating
white
1 Colors

top



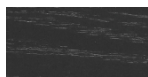
HPL 10 mm
HPL fenix
2 Colors



HPL 10 mm
white HPL fenix
1 Colors



wood
blanch oak
1 Colors



wood
black open pore
1 Colors

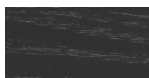
partition panel



HPL 10 mm
HPL fenix
2 Colors



wood
blanch oak
1 Colors



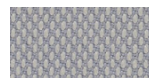
wood
black open pore
1 Colors



fabric
Hallingdal 65
47 Colors



fabric
Canvas 2
40 Colors



fabric
Steelcut Trio 3
48 Colors



fabric
Remix 2
24 Colors



fabric
Clara 2
24 Colors



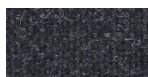
fabric
Fiord
24 Colors



fabric
Divina MD
24 Colors



fabric
Divina Melange 2
24 Colors



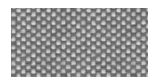
fabric
Tonica 2
39 Colors



fabric
Medley
37 Colors



fabric
Swing
24 Colors



fabric
Maya
1 Colors



fabric
Jet
1 Colors



fabric
Laser J Flash
1 Colors

consult the portfolio for the range of colors, fabrics, eco-leather, soft-leather.

use and maintenance instructions

Clean all parts in wood, leather, fabric and metal with a damp cloth or a diluted neutral cleaner. Do not use cleaners with alcohol, bleach, solvent or abrasive products. Any liquid spilt on the product must be wiped up immediately. When lifting or moving the product, hold it on the structure and not under the seat. The product should not be subjected to unbalanced weights, as it is designed for a proper rest on the foothold (on four legs or on the base). Our company relieves from any responsibility in case of damage caused to fragile floors. Avoid any improper use of the product: do not step on the product, on the footrest or on the armrests. Avoid any movements that could compromise the proper functionality of the product or the safety of the users. Wood and leather, being natural materials, could be easily damaged. Small impurities or imperfections are within quality standard range. Do not expose the product to weather conditions or atmospheric agents, nor to heat sources over 40°C. Also products for outdoor use could be afflicted by atmospheric agents. The product could undergo possible exterior changes due to particular exposure to heat, humidity and saltiness. An appropriate and frequent maintenance and cleaning of the product enhances its durability. The product could change colour and shade, if exposed to direct sunlight. Maintenance has to be carried out by experienced staff. Dispose of the package only after assembling the product, in order to avoid the loss of ironmongery and components. Once the product has been dismantled, the product itself or its components must be given to the public garbage disposal system, according to the legislation in force.