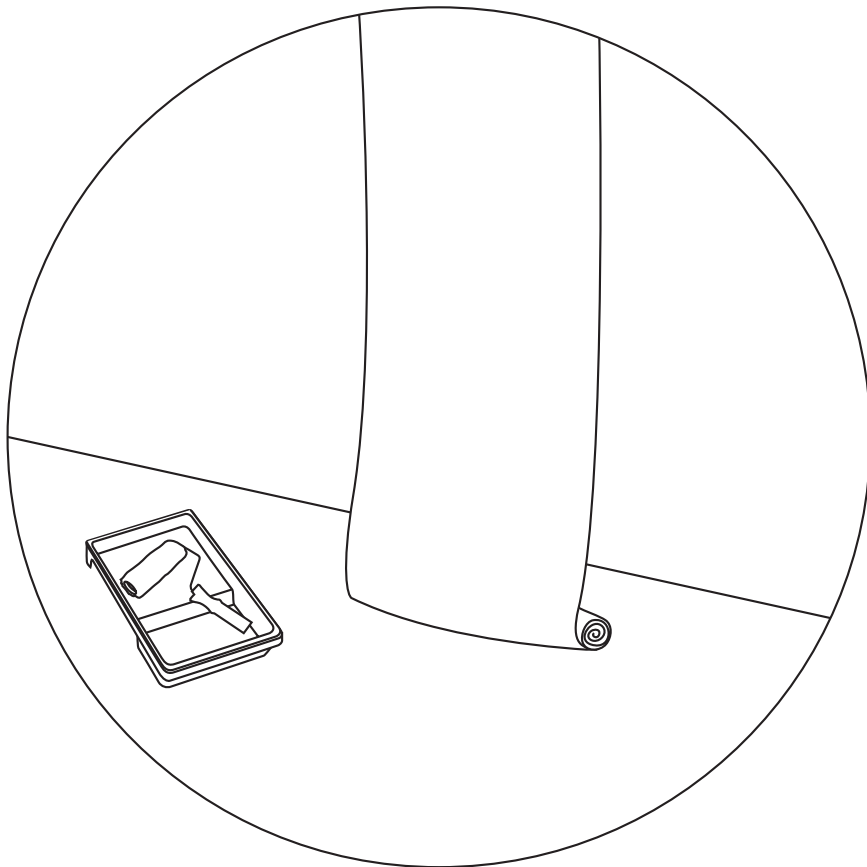


WALLPAPER HANGING GUIDE

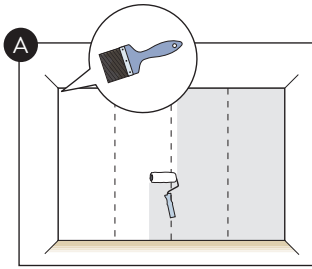


WWW.FERMLIVING.COM

ferm
L I V I N G

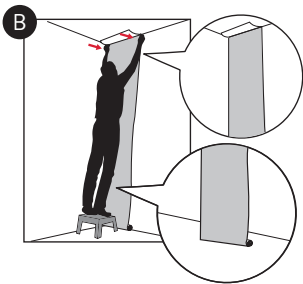
WALLPAPER HANGING GUIDE

- HOW TO WALLPAPER WITH WALLSMART



BEFORE

- Remember to account for pattern repeat
- Always use paste suitable for non-woven wallpaper
- Check that all rolls of wallpaper have the same batch number. Be sure to buy enough rolls with matching batch numbers in order to get the same colour on all rolls (the batch number is printed on the label).
- If you have large colour differences on wall, the wall must be primed before hanging the wallpaper (primarily when using bright wallpaper).



TOOLS

Following tools are good too have



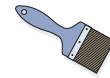
Scissors



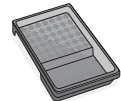
Pencil



Roller



Paint brush



Tray



A bowl of water



Sponge



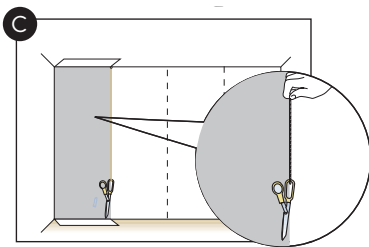
Spatula



Scraper



A sharp knife



GUIDE

A. Apply paste onto the wall with a roller. Put on paste for about 2-3 lengths at a time. Use a brush to apply paste by ceiling, floor and edges.

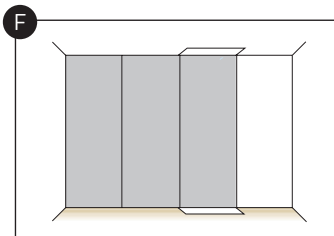
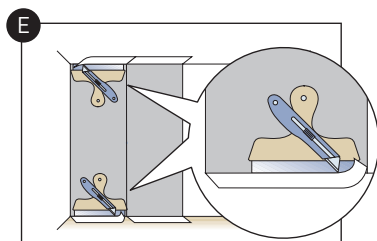
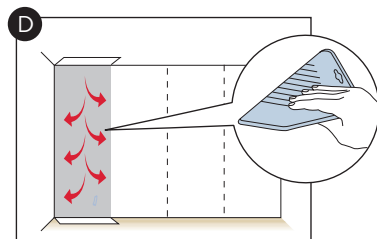
B. Pull up one length of wallpaper directly from the roll/floor, and hang it on the pasted wall. Make sure you have a few extra centimeters of wallpaper at the ceiling and floor and make sure that the wallpaper hangs straight.

C. Make sure that the wallpaper hangs correctly by hanging a pair of scissors on a string from the ceiling.

D. Smooth the section of wallpaper from the top down and from the centre outwards. Use a wallpaper brush or spatula and make sure that all air bubbles are removed.

E. Trim excess wallpaper using a sharp wallpaper knife.

F. Hang the next section by butting the edges together. Make sure that the pattern matches across the two sections. Wash away excess paste with a damp, soft sponge. Do not rub.



AFTER

- Make sure to ventilate the room well to make the wallpaper dry.
- The wallpaper is washable. If needed, wipe off with a damp sponge.
- Wipe off vertically and do not rub.